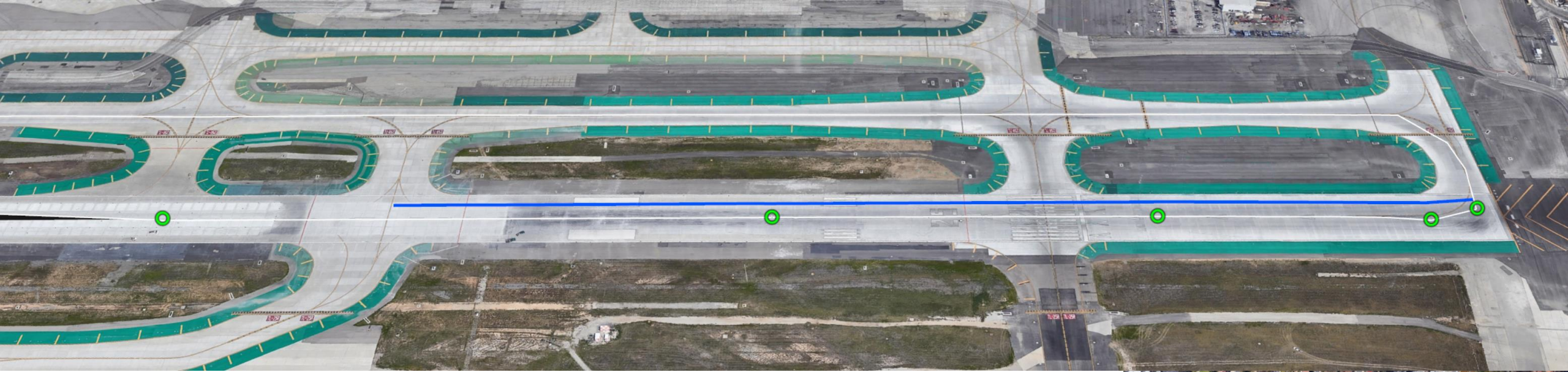




Back in the day that I was working in Aviation Propulsion, the B777 came out. Nick and Eli's aircraft on Wednesday, non-stop to Amsterdam from LAX was a B777-300, with two GE90-115B engines, the world's most powerful engines to date, capable of providing 115,000lbs of thrust. I can stand upright in the inlet of the engine. But back to Nick and Eli's flight. When it made the turn onto the runway, it was going 15MPH or 13kts. It took off at about 100kts or 115MPH, after traveling less than half a mile (0.41 Miles). This got me to thinking. Here is a plane that is nearly 400 feet long, weighing in at nearly 330 tons, and capable of flying 325 passengers on average 1/3rd of the way around the world.

I started to think about Calypso – almost 15 feet long, a ton and a half, carrying 2 people for 400 miles. Some BIG differences.



But, are they similar at all?

I looked at the NON-Flying part. Their flight took off at 125MPH, Calypso has done that, as a matter of fact 153MPH to be exact, but she didn't take off. She was securely planted on the highway. So let's take the likelihood of FLIGHT off the table.

Recently I accelerated up the I-15 on Ramp from Camino Del Norte. When I looked at my speed, to merge into a large gap in the traffic, I was doing 90MPH, and had covered that in 3.8 seconds. So I took the distance I had covered there and placed it on the runway at LAX from which their flight left.

The Green circles shows the B777's one second marks. **DAMN CLOSE!**

True 'nough, Calypso Don't FLY – but damn close.

